

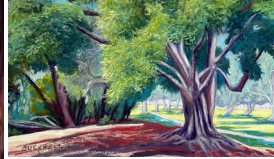
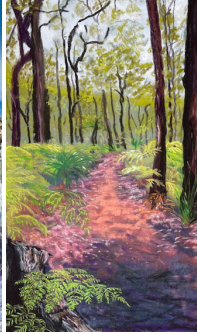
**NEW DATES!**  
Sun 10th - Mon 11th Aug



*The Pastel Society*  
of Western Australia  
**2025 Annual  
Exhibition**

# EXHIBITION

**Opening Night:** Sat 9th Aug, 7:00pm - 9:00pm  
**Exhibition:** Sun 10th - Mon 11th Aug, 9:00am - 5:00pm  
**Sorrento Surf Lifesaving Club, 189 West Coast Drive**



The Pastel Society of Western Australia's exhibition is generously supported by our sponsors



**OXLADES**



**Art & Craft World**

**Caitlin Collins MLA**  
Member for Hillarys

